



25 Wallenberg Drive, Maple, ON

Elegant, contemporary, luxury house for sale

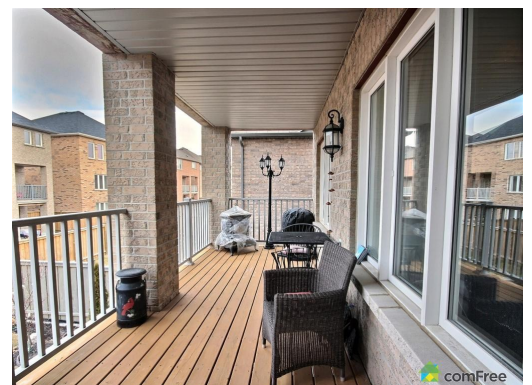
Price: 1,429,000 CAD

Contact: 289-553-2373, info@thornhillhouseforsale.ca

Listed on: MLS, ComFree.com

Highlights

- Includes countless upgrades both interior and exterior totaling over 200k
- Build in 2011
- Open-concept 3 stories home with total over 3,800 sq. feet
- Most desirable neighborhood of "The Valleys of Thornhill", close to 407, 400, 404 and 7 highways, Go Train, and Shopping malls
- Located within walking distance from Nelly McClung public school, Longo plaza, Lebovic Wolf Jewish Community Center, playground and tennis court
- High (up to 16 feet) ceiling at main entrance and home office, 9 feet ceiling on main floor
- Custom build cabinetry in kitchen, home office and all bathrooms
- 3 1/4 x 3/4 Bruce Mocha oak hardwood throughout main floor and in hallway and flexi room on second floor, upgraded carpet and under-pad in all bedrooms, 4 x 1/2 oak engineering floor in recreation room
- Granite countertop in the kitchen and quartz countertops in bathrooms
- Closet organizers in main-floor WC, master bedroom WC and bedroom # 2 WC
- 2 layered coffered ceiling in dining room
- Custom finished 2-color oak stair case
- Air conditioner with humidifier
- Central vacuum cleaner
- 2 garage door openers with remote control
- Custom wrought iron insert and transom in main entrance door
- Covered concrete porch at the front
- Huge covered balcony at the rear
- Front and rear landscape with stone patio, number of trees and outdoor wood fireplace
- Stained fence



Kitchen

- Raised 9 foot cabinets with crown molding
- Upper cabinets with glass doors all throughout
- Painted maple cabinet doors with soft closing
- Granit countertop
- Spice drawers from both sides of stove
- 2 Pot drawers
- Stainless steel chimney hood
- Marble ceramic backsplash
- "Lazy Susan" in the corner
- Pantry with shelves and drawers
- Broom cabinet
- Garbage 2 bins drawer
- 8 feet Built-in glass door cabinets for fine kitchen ware with wine rack and internal light
- Light valance all throughout
 - Oversized island features
- In-sink e-rotator
- Under-mount sink
- Reverse Osmosis water filtration system
- Garbage bucket
- All stainless steel appliances:
 - Thermador 30" Professional gas stove, stain free
 - Counter-deep refrigerator, stain free
 - Stainless steel inside dishwasher



Home office (library)

- 15 foot high ceiling
- Oversized window with round top
- One of a kind 11 foot high maple custom cabinetry with glass doors
- Decorative columns and moldings and internal light
- Bronze chandelier



Master-in-suite

- Custom Built vanities with maple doors and soft closing
- Quartz countertop
- Built-in glass door cabinet with bulk and crown molding and 5 pot-lights
- 2 under mount sinks
- Grand frameless glass shower

Bathroom #2

- Custom built vanity with maple doors and soft closing
- Make-up column cabinet (from floor to ceiling) with glass doors
- Bulk head with molding
- Backsplash
- Quartz countertop
- Under-mount sink



Bathroom #3

- Custom built vanity
- Built-in pantry with molding
- Quartz countertop
- Under-mount sink
- Private bath-tab and toilet



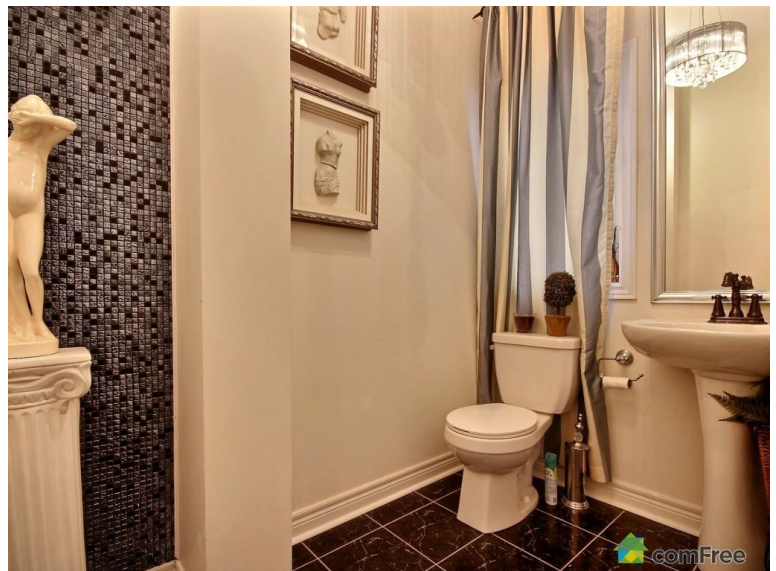
Bathroom #4

- Custom built cabinet with maple doors
- All Wall-covering backsplash



Powder room

- Oversized powder room
- 10 foot ceiling with chandelier
- Niche with backsplash and wall-mount light



Laundry room

- Second floor laundry room
- Custom built-in cabinets and uppers with maple doors and soft closing
- Quartz countertop
- Big under-mount sink
- Backsplash
- LG low vibration washer and drier



Recreation room

- Wall with gas fireplace finished with natural stone and reclaimed wood beam
- Wall-mounted TV unit with hidden wires
- Engineering 4 x 1/2 floor

Landscape

- Front stone pathway to the house
- Around perimeter stone path on the driveway
- Landscaped front yard with trees, bushes and Spruce tree
- Stone patio covering 2/3 of backyard
- 6 pyramid oak trees
- 5 cedar trees (8 foot high)
- 3 6-foot cedar trees on right side
- 1 pyramidal pine tree
- 2 red maple decorative trees
- Usable covered under-balcony area
- Outdoor wood-burning fireplace

